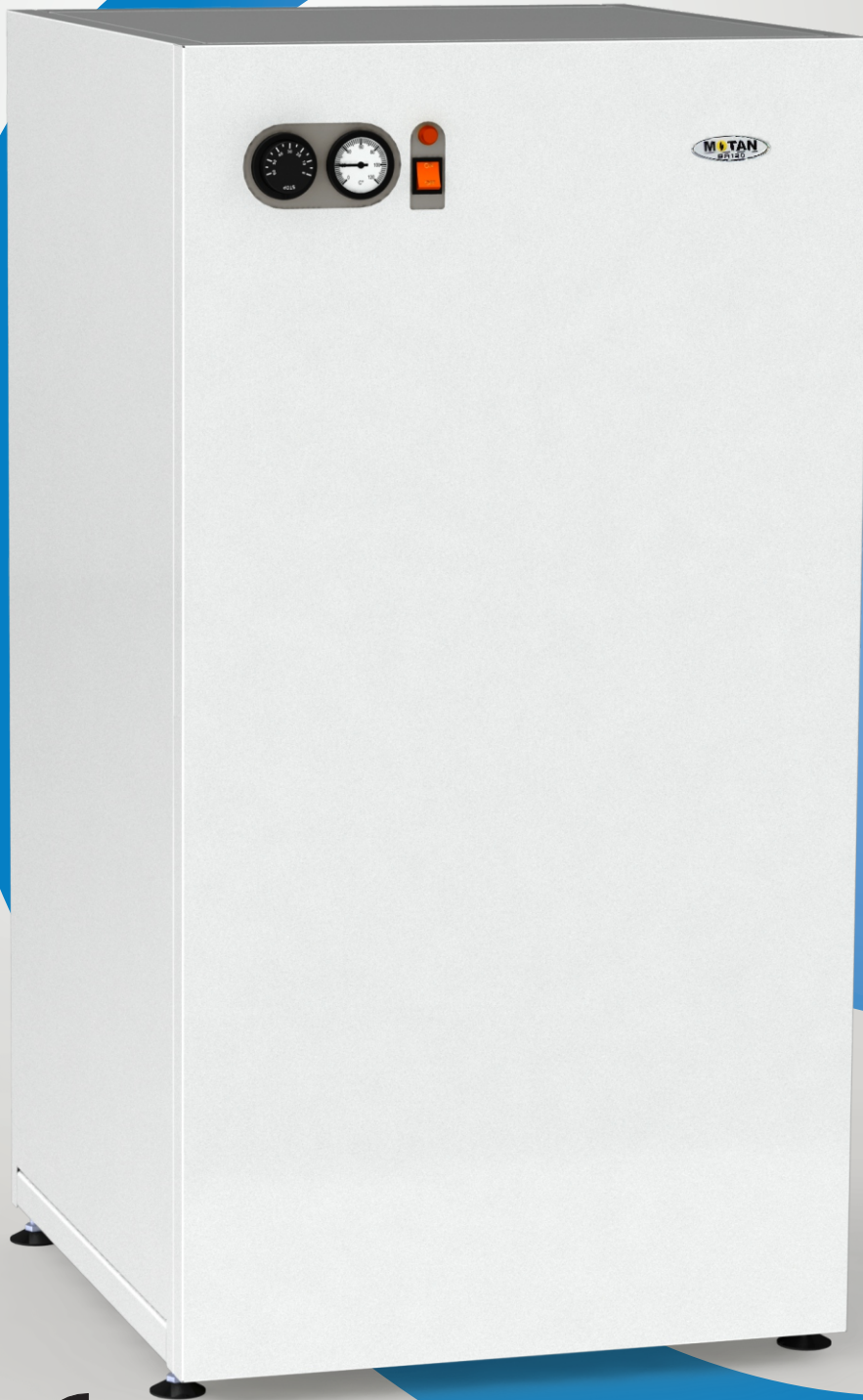


# BA120L-V1

## STORAGE TANK

High DHW comfort



**Capacity:  
120 liters**

**STAINLESS  
STEEL  
tank**

**PU foam  
thermo-  
insulation**

**Equipped with  
Mixing Valve  
kit with  
anti-damping  
function.**



made by

**KÖBER**

# BA120L-V1

## STORAGE TANK

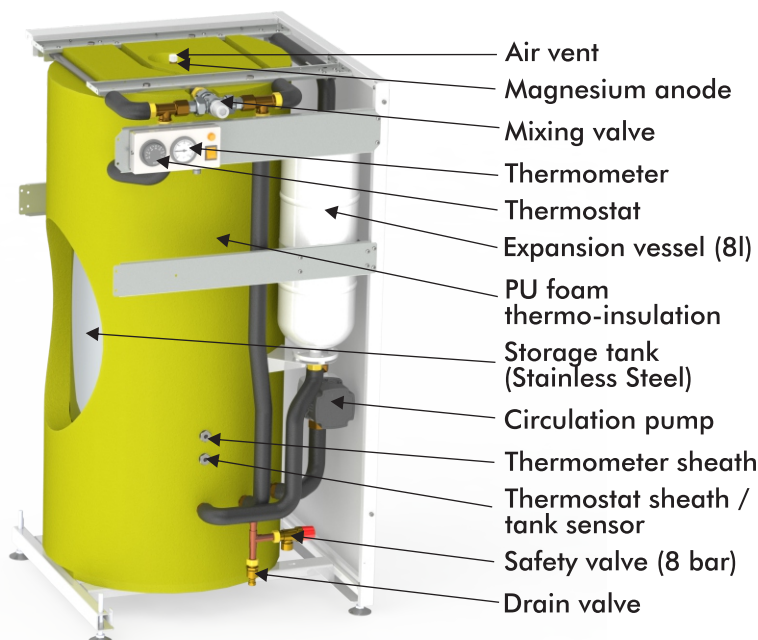
High DHW comfort

### Characteristics:

- The storage tank is made from stainless steel, this fact assures 10 years medium lifetime, through the shocks and corrosion resistance, also the quality of stored domestic hot water.
- STORAGE mode tank. Must be attached to a boiler wich produces domestic hot water. Results an assembly: gas boiler and storage tank - with a superior efficiency and comfort.
- Store the volume of water at temperatures up to 75-78°C which leads to a considerable increase in the time of use of stored domestic hot water. This also eliminates the risk of occurrence of legionella bacteria.
- Temperature losses are considerably reduced, due to the use of a high quality insulation, from polyurethane foam.
- COMPACT product witch incorporate the safety elements: expansion vessel (8l), safety valve (8 bar) and command and control elements: control pannel (thermostat and thermometer), and also circulation pump and drain valve.
- Supplementary anti-corrosion protection, assured by magnesium anode, with Ca and Mg ions attraction function.

|   |                     |
|---|---------------------|
| Name  | DHW Storage Tank    |
| Type  | BA120L-V1           |
| Maximum level of noise  | <50 dB(A)           |
| Capacity of storage domestic hot water  | 120 liters          |
| DHW maximum pressure  | 8 bar               |
| Recommended maximum input pressure  | 5 bar               |
| Maximum input DHW temperature   | 60°C                |
| User output DHW temperature (the temperature is adjusted by the mixing valve kit) | 30 - 50°C           |
| User output DHW temperature set from the factory                                  | ≈45°C               |
| Storage minimum temperature   | 5°C                 |
| Expansion vessel with membrane  | 8 liters            |
| Loading pressure for the expansion vessel   | 3,5 bar             |
| Electric characteristics  | 230V/50Hz<br>- 135W |
| Netto weight (without water)  | 61 kg               |
| Connections:  |                     |
| Inlet domestic cold water   | 3/4 "               |
| Outlet domestic hot water   | 3/4 "               |
| Outlet/Inlet circulation water  | 3/4 "               |
| Dimensions:   |                     |
| Depth (mm):   | 645                 |
| Length (mm):  | 600                 |
| Height (mm):  | 1150                |

### Main parts:



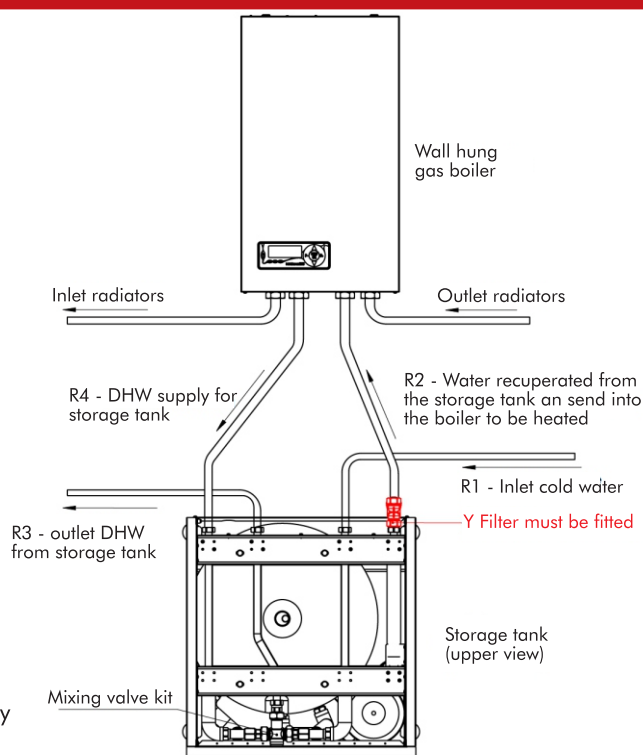
### Mixing Valve kit FUNCTIONS:

- reduces the temperature at the point of use to a value lower than that of storage in the boiler to be suitable for domestic use;
- ensures high thermal performance and is able to precisely control the temperature of the water mixture supplied in case of variations in pressure, temperature or flow;
- anti-damping function which immediately stops the hot water flow in the event of a cold water supply failure.

### Tehnickal specification of mixing valve:

|   |         |
|---|---------|
| Water outlet temperature - range  | 30-50°C |
| Precision   | +/- 2°C |
| Maximum working pressure (static)   | 10 bar  |
| Maximum working pressure (dynamic)  | 5 bar   |
| Maximum inlet temperature   | 85°C    |
| Maximum inlet pressure ratio  | 6:1     |
| Minimum temperature difference between hot water inlet and mixed water outlet to ensure anti-rust | 10°C    |
| Minimum flow for optimum performance  | 4 l/min |

### Connections:



The Quality Management System implemented within our company assures and is certified according to the ISO 9001:2015 standard by the DNV GL Certification Organisation

**KOBER Ltd. Dumbrava Rosie, VADURI Branch; Office: Vaduri no. 280, Alexandru cel Bun Commune, Neamt district; postal code 617511, ROMANIA; phone: +40 233 241746, 241933, 241945. Fax: +40 233 241929, E-mail: office.vaduri@kober.ro , www.motan.ro**